

Test report is for reference only.

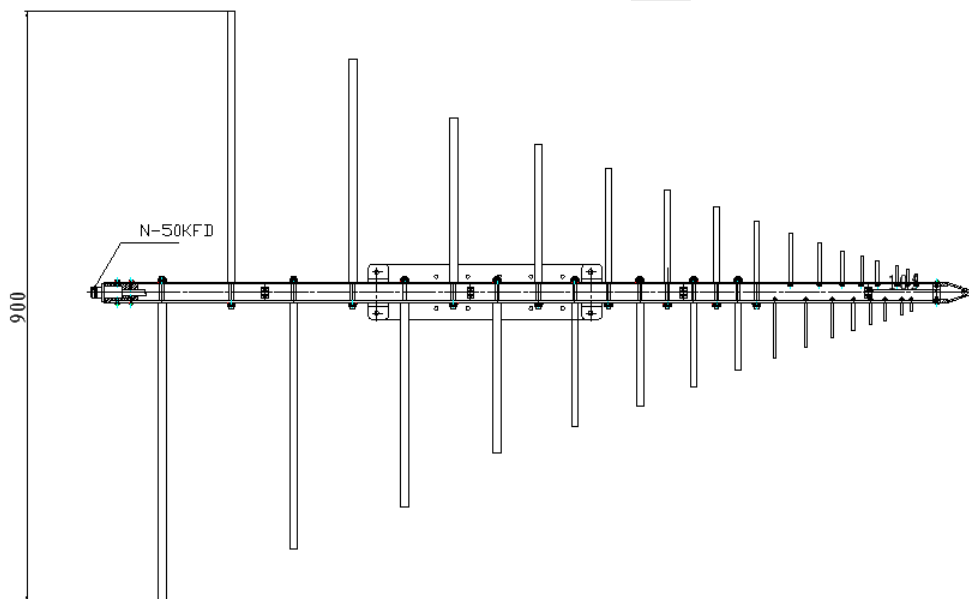
**TEST REPORT**  
**For**  
**JXTXDS-18100**



## Technical Specification

Frequency Range	Gain(Typ.)	Polarization	VSWR max	Connector	Net Weight(Kg)
180-1000MHz	6dBi	Linear	3.0:1	N Type	3.66Around

## Outline Drawing and Mounting Holes (Size: mm)



## Test Instruments

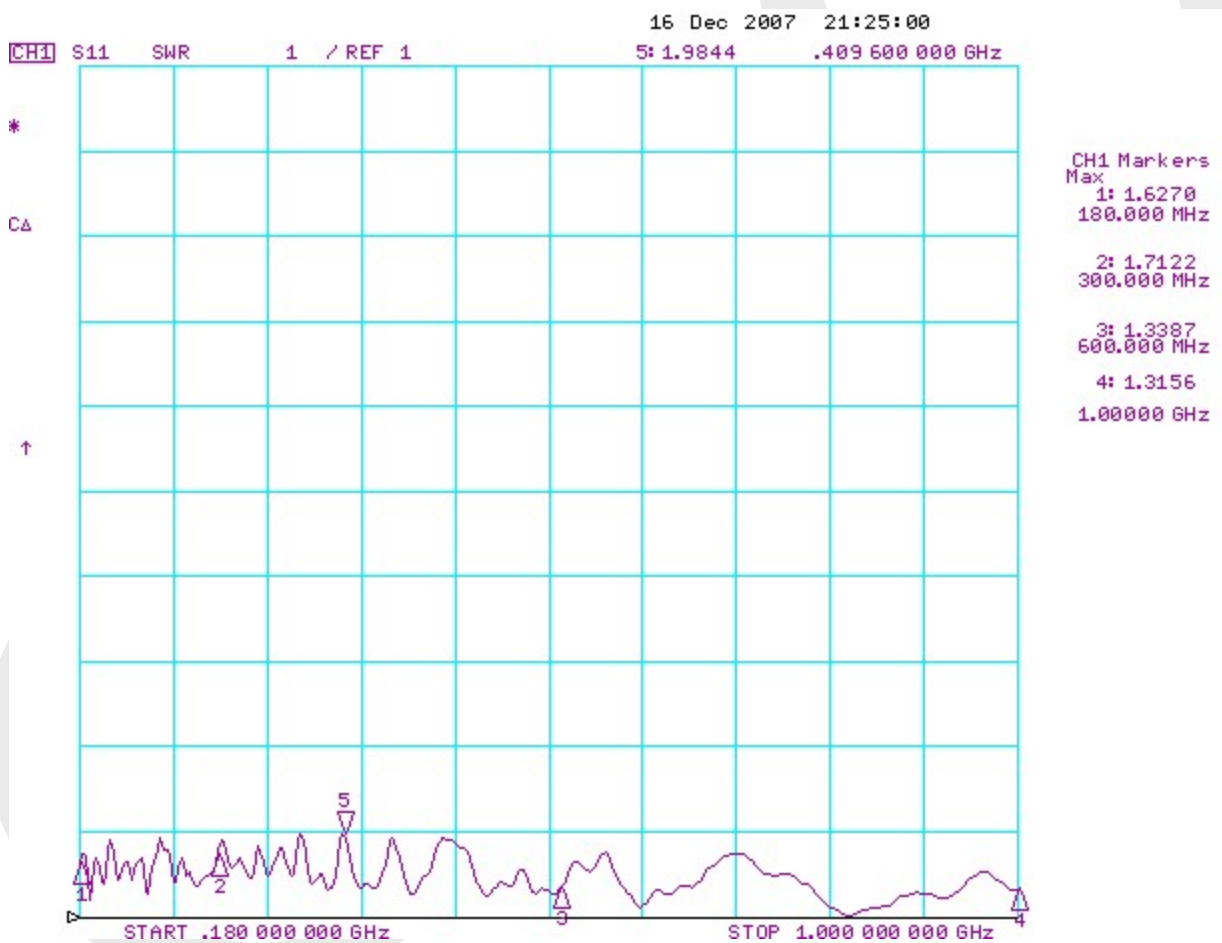
- AV1487B
- HP8592L
- HP8720D

## Test Results

### 1. Gain

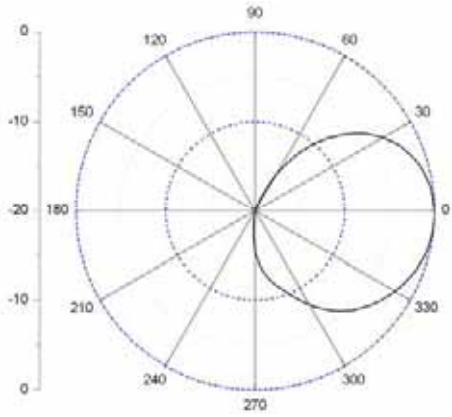
Frequency(MHz)	180	500	1000
Gain(dBi)	6.0	7.0	6.7

### 2. VSWR

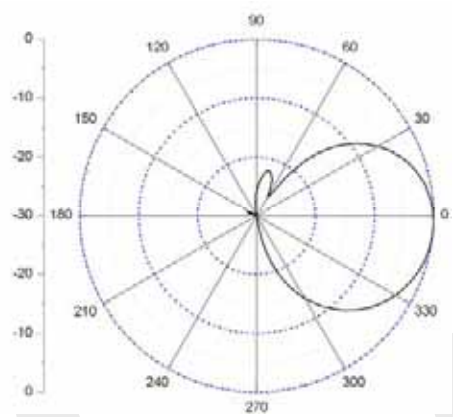


### 3. Pattern

Frequency: 180MHz

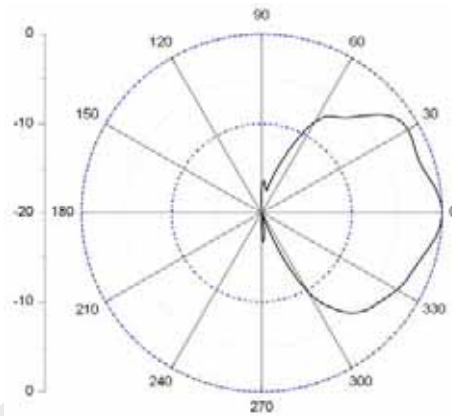


H-Plane

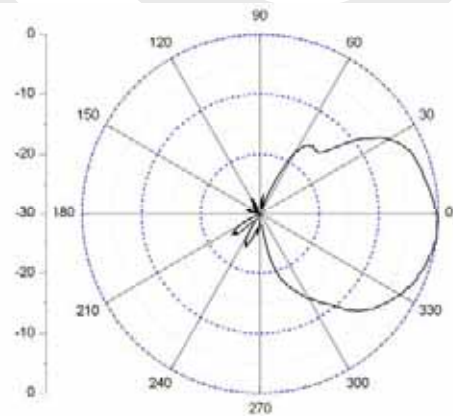


E-Plane

Frequency: 500MHz

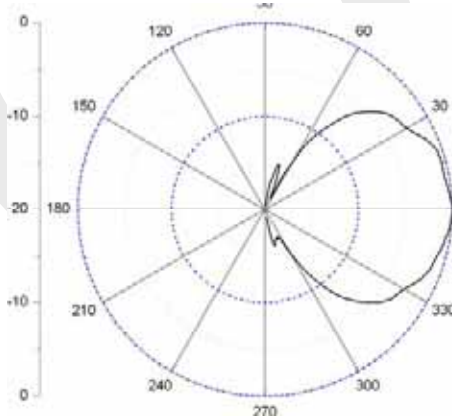


H-Plane

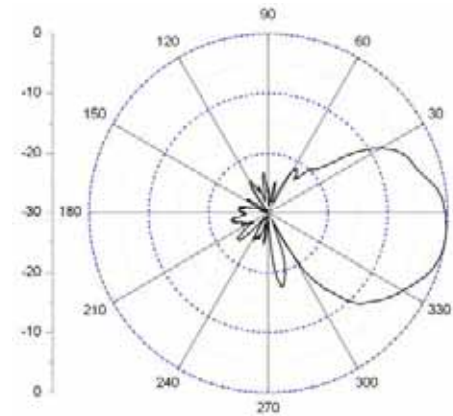


E-Plane

Frequency: 1000MHz



H-Plane



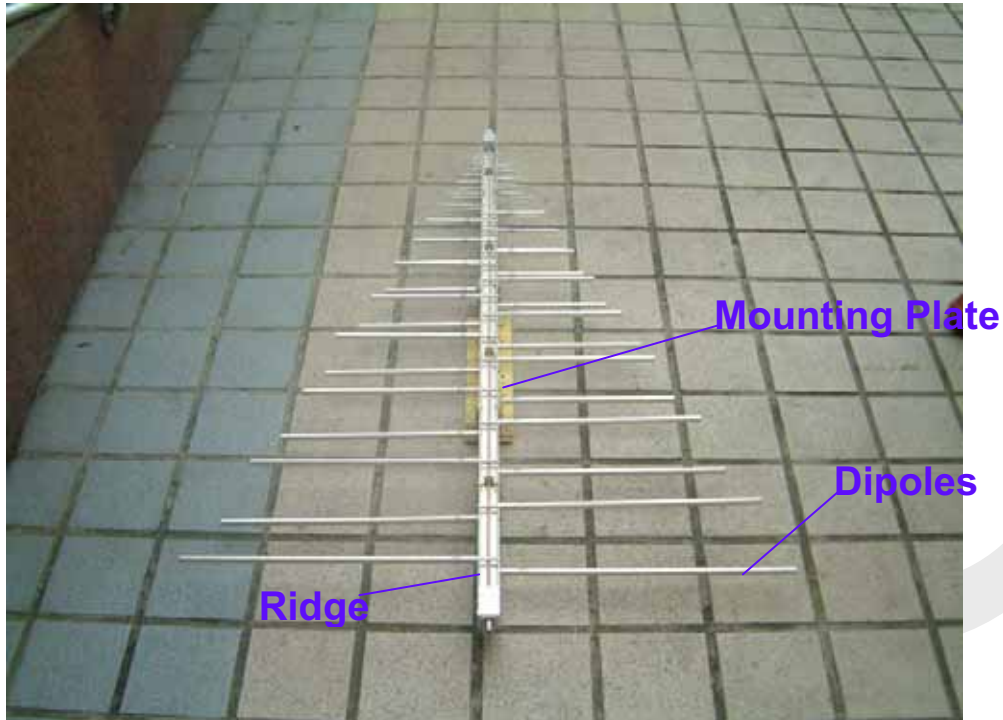
E-Plane

**Installation Manual**  
**For**  
**OLP-18100**



A. Parts of the antenna

1. **Dipoles, Ridge** and **Mounting Plate**. See picture below.



2. **Antenna Mounting Kit (W/hoop)**. See picture below.



## B. Mounting method

1. Pls. use the hoop to make the **Antenna Mounting Kit** to be fixed on the place where you would like to install the antenna. Pls. see picture below.



2. Pls. use **4 screws** to fix the **Antenna Mounting Kit** on the **mounting plate**.





C. Finishing picture

